

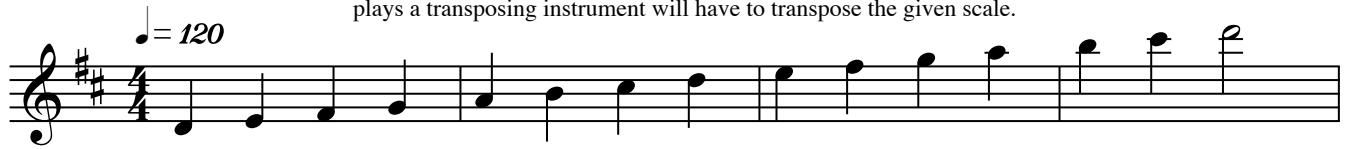
IHSA Required Scales

B-Flat Trumpet, Cornet Treble Clef Baritone

All scales for wind instruments shall be played two octaves where applicable but one octave where range restricts. Scales and the chromatic will be played from memory.

Concert C Scale (your D Scale)

The scales listed, including the chromatic scale, will be called for in concert pitch and will be played two octaves, both up and down. This means that each player who plays a transposing instrument will have to transpose the given scale.



Concert F Scale (your G Scale)



Concert B-Flat Scale (your C Scale)



Concert E-Flat Scale (your F Scale)



Concert A-Flat Scale (your B-Flat Scale)

♩ = 120

Concert D-Flat Scale (your E-Flat Scale)

♩ = 120

Concert G Scale (your A Scale)

♩ = 120

Chromatic Scale-Concert F to F (your G to G Chromatic Scale)

♩ = 120

IHSA Required Scales

French Horn

All scales for wind instruments shall be played two octaves where applicable but one octave where range restricts.

Scales and the chromatic will be played from memory.

The scales listed, including the chromatic scale, will be called for in concert pitch and will be played two octaves, both up and down. This means that each player who plays a transposing instrument will have to transpose the given scale.

Concert C Scale (your G Scale)

$\text{♩} = 120$

Concert F Scale (your C Scale)

$\text{♩} = 120$

Concert B-Flat Scale (your F Scale)

$\text{♩} = 120$

Concert E-Flat Scale (your B-Flat Scale)

$\text{♩} = 120$

IHSA Required Scales

Concert A-Flat Scale (your E-Flat Scale)

$\text{♩} = 120$

The musical notation for the Concert A-Flat Scale (your E-Flat Scale) is written on a single staff in treble clef. The key signature has three flats (B-flat, E-flat, A-flat). The tempo marking is quarter note = 120. The scale consists of 12 notes: A-flat, B-flat, C, D, E-flat, F, G, A, B-flat, C, D, E-flat. The first six notes are quarter notes, and the last six notes are quarter notes, with a final half note on E-flat.

Concert D-Flat Scale (your A-Flat Scale)

$\text{♩} = 120$

The musical notation for the Concert D-Flat Scale (your A-Flat Scale) is written on a single staff in treble clef. The key signature has three flats (B-flat, E-flat, A-flat). The tempo marking is quarter note = 120. The scale consists of 12 notes: D-flat, E-flat, F, G, A, B-flat, C, D, E-flat, F, G, A. The first six notes are quarter notes, and the last six notes are quarter notes, with a final half note on A.

Concert G Scale (your D Scale)

$\text{♩} = 120$

The musical notation for the Concert G Scale (your D Scale) is written on a single staff in treble clef. The key signature has two sharps (F-sharp, C-sharp). The tempo marking is quarter note = 120. The scale consists of 12 notes: G, A, B, C, D, E, F-sharp, G, A, B, C, D. The first six notes are quarter notes, and the last six notes are quarter notes, with a final half note on D.

Chromatic Scale-Concert C to C (your G to G Chromatic)

$\text{♩} = 120$

The musical notation for the Chromatic Scale-Concert C to C (your G to G Chromatic) is written on three staves in treble clef. The key signature has one sharp (F-sharp). The tempo marking is quarter note = 120. The scale consists of 24 notes: C, C-sharp, D, D-sharp, E, E-flat, F, F-sharp, G, G-sharp, A, A-flat, B, B-sharp, C, C-sharp, D, D-sharp, E, E-flat, F, F-sharp, G, G-sharp. The first 12 notes are quarter notes, and the last 12 notes are quarter notes, with a final half note on C.

IHSA Required Scales

Trombone Baritone B.C.

Concert C Scale

All scales for wind instruments shall be played two octaves where applicable but one octave where range restricts. Scales and the chromatic will be played from memory. The scales listed, including the chromatic scale, will be called for in concert pitch and will be played two octaves, both up and down. This means that each player who plays a transposing instrument will have to transpose the given scale.

$\text{♩} = 120$



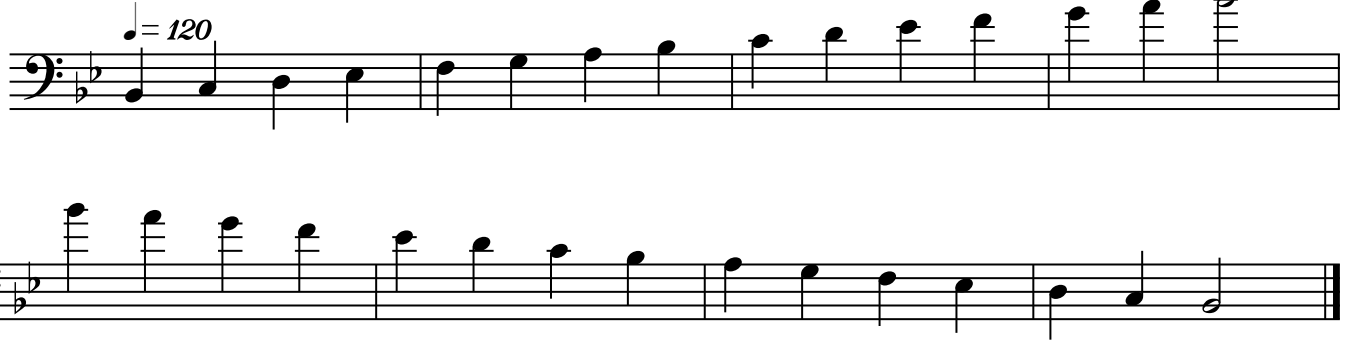
Concert F Scale

$\text{♩} = 120$



Concert B-Flat Scale

$\text{♩} = 120$



Concert E-Flat Scale

$\text{♩} = 120$



IHSA Required Scales

Concert A-Flat Scale

$\text{♩} = 120$

Two staves of music for the Concert A-Flat Scale. The first staff shows the ascending scale from A-flat to A-flat. The second staff shows the descending scale from A-flat to A-flat. The key signature has three flats (B-flat, E-flat, A-flat).

Concert D-Flat Scale

$\text{♩} = 120$

Two staves of music for the Concert D-Flat Scale. The first staff shows the ascending scale from D-flat to D-flat. The second staff shows the descending scale from D-flat to D-flat. The key signature has four flats (B-flat, E-flat, A-flat, D-flat).

Concert G Scale

$\text{♩} = 120$

Two staves of music for the Concert G Scale. The first staff shows the ascending scale from G to G. The second staff shows the descending scale from G to G. The key signature has one sharp (F-sharp).

Chromatic Scale-Concert F to F

$\text{♩} = 120$

Three staves of music for the Chromatic Scale-Concert F to F. The first staff shows the ascending chromatic scale from F to F. The second staff shows the descending chromatic scale from F to F. The key signature has one flat (B-flat).

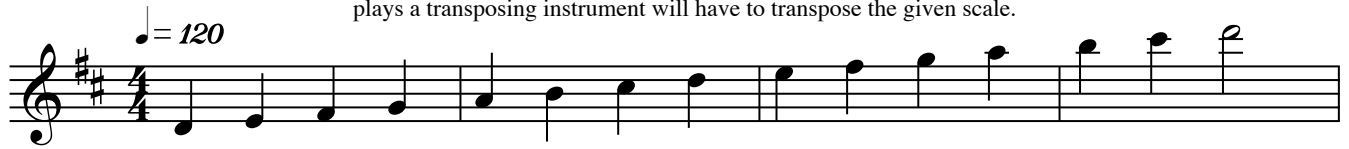
IHSA Required Scales

B-Flat Trumpet, Cornet Treble Clef Baritone

All scales for wind instruments shall be played two octaves where applicable but one octave where range restricts. Scales and the chromatic will be played from memory.

Concert C Scale (your D Scale)

The scales listed, including the chromatic scale, will be called for in concert pitch and will be played two octaves, both up and down. This means that each player who plays a transposing instrument will have to transpose the given scale.



Concert F Scale (your G Scale)



Concert B-Flat Scale (your C Scale)



Concert E-Flat Scale (your F Scale)



IHSA Required Scales

Concert A-Flat Scale

♩ = 120

Two staves of music for the Concert A-Flat Scale. The first staff shows the ascending scale from A-flat to G. The second staff shows the descending scale from G to A-flat. The key signature has three flats (B-flat, E-flat, A-flat).

Concert D-Flat Scale

♩ = 120

Two staves of music for the Concert D-Flat Scale. The first staff shows the ascending scale from D-flat to C. The second staff shows the descending scale from C to D-flat. The key signature has two flats (B-flat, E-flat).

Concert G Scale

♩ = 120

Two staves of music for the Concert G Scale. The first staff shows the ascending scale from G to G. The second staff shows the descending scale from G to G. The key signature has one sharp (F-sharp).

Chromatic Scale-Concert F to F

♩ = 120

Three staves of music for the Chromatic Scale-Concert F to F. The first staff shows the ascending chromatic scale from F to F. The second staff shows the descending chromatic scale from F to F. The key signature has one flat (B-flat).

IHSA Required Scales

E-Flat Tuba

All scales for wind instruments shall be played two octaves where applicable but one octave where range restricts.

Scales and the chromatic will be played from memory.

The scales listed, including the chromatic scale, will be called for in concert pitch and will be played two octaves, both up and down. This means that each player who plays a transposing instrument will have to transpose the given scale.

Concert C Scale

$\text{♩} = 120$

Two staves of musical notation for the Concert C Scale. The first staff shows the scale ascending from C2 to C3. The second staff shows the scale descending from C3 to C2. The time signature is 4/4.

Concert F Scale

$\text{♩} = 120$

Two staves of musical notation for the Concert F Scale. The first staff shows the scale ascending from F2 to F3. The second staff shows the scale descending from F3 to F2. The time signature is 4/4.

Concert B-Flat Scale

$\text{♩} = 120$

Two staves of musical notation for the Concert B-Flat Scale. The first staff shows the scale ascending from B-flat2 to B-flat3. The second staff shows the scale descending from B-flat3 to B-flat2. The time signature is 4/4.

Concert E-Flat Scale

$\text{♩} = 120$

Two staves of musical notation for the Concert E-Flat Scale. The first staff shows the scale ascending from E-flat2 to E-flat3. The second staff shows the scale descending from E-flat3 to E-flat2. The time signature is 4/4.

IHSA Required Scales

Concert A-Flat Scale

$\text{♩} = 120$

The musical notation for the Concert A-Flat Scale is written on a bass clef staff. It begins with a key signature of three flats (B-flat, E-flat, A-flat) and a tempo marking of quarter note = 120. The scale is presented in two lines: the first line shows the ascending scale from A-flat to G, and the second line shows the descending scale from G to A-flat. The notes are: A-flat, B-flat, C, D, E-flat, F, G, A-flat, G, F, E-flat, D, C, B-flat, A-flat.

Concert D-Flat Scale

$\text{♩} = 120$

The musical notation for the Concert D-Flat Scale is written on a bass clef staff. It begins with a key signature of four flats (B-flat, E-flat, A-flat, D-flat) and a tempo marking of quarter note = 120. The scale is presented in two lines: the first line shows the ascending scale from D-flat to C, and the second line shows the descending scale from C to D-flat. The notes are: D-flat, E-flat, F, G, A-flat, B-flat, C, D-flat, C, B-flat, A-flat, G, F, E-flat, D-flat.

Concert G Scale

$\text{♩} = 120$

The musical notation for the Concert G Scale is written on a bass clef staff. It begins with a key signature of one sharp (F-sharp) and a tempo marking of quarter note = 120. The scale is presented in two lines: the first line shows the ascending scale from G to F-sharp, and the second line shows the descending scale from F-sharp to G. The notes are: G, A, B, C, D, E, F-sharp, G, F-sharp, E, D, C, B, A, G.

Chromatic Scale-Concert F to F

$\text{♩} = 120$

The musical notation for the Chromatic Scale-Concert F to F is written on a bass clef staff. It begins with a key signature of two flats (B-flat, E-flat) and a tempo marking of quarter note = 120. The scale is presented in three lines: the first line shows the ascending chromatic scale from F to F-sharp, the second line shows the descending chromatic scale from F-sharp to F, and the third line shows the ascending chromatic scale from F to F. The notes are: F, F-sharp, G, G-flat, A, A-flat, B, B-flat, C, C-sharp, D, D-flat, E, E-flat, F, F-sharp, G, G-flat, A, A-flat, B, B-flat, C, C-sharp, D, D-flat, E, E-flat, F.

**Vibraharp
Xylophone
Marimba**

IHSA Required Scales

All scales for wind instruments shall be played two octaves where applicable but one octave where range restricts.

Scales and the chromatic will be played from memory.

The scales listed, including the chromatic scale, will be called for in concert pitch and will be played two octaves, both up and down. This means that each player who plays a transposing instrument will have to transpose the given scale.

Concert C Scale

$\text{♩} = 120$

The Concert C Scale is written on a treble clef staff in 4/4 time. The tempo is marked as quarter note = 120. The ascending scale consists of the notes C4, D4, E4, F4, G4, A4, B4, and C5. The descending scale consists of the notes C5, B4, A4, G4, F4, E4, D4, and C4. The piece ends with a double bar line.

Concert F Scale

$\text{♩} = 120$

The Concert F Scale is written on a treble clef staff in 4/4 time. The key signature has one flat (B-flat). The tempo is marked as quarter note = 120. The ascending scale consists of the notes F4, G4, A4, B-flat4, C5, D5, E5, and F5. The descending scale consists of the notes F5, E5, D5, C5, B-flat4, A4, G4, and F4. The piece ends with a double bar line.

Concert B-Flat Scale

$\text{♩} = 120$

The Concert B-Flat Scale is written on a treble clef staff in 4/4 time. The key signature has two flats (B-flat and E-flat). The tempo is marked as quarter note = 120. The ascending scale consists of the notes B-flat4, C5, D5, E-flat5, F5, G5, A5, and B-flat5. The descending scale consists of the notes B-flat5, A5, G5, F5, E-flat5, D5, C5, and B-flat4. The piece ends with a double bar line.

Concert E-Flat Scale

$\text{♩} = 120$

The Concert E-Flat Scale is written on a treble clef staff in 4/4 time. The key signature has three flats (B-flat, E-flat, and A-flat). The tempo is marked as quarter note = 120. The ascending scale consists of the notes E-flat4, F4, G4, A-flat4, B-flat4, C5, D5, and E-flat5. The descending scale consists of the notes E-flat5, D5, C5, B-flat4, A-flat4, G4, F4, and E-flat4. The piece ends with a double bar line.

IHSA Required Scales

Concert A-Flat Scale

♩ = 120

The Concert A-Flat Scale is written in treble clef with a key signature of three flats (B-flat, E-flat, A-flat). The tempo is marked as quarter note = 120. The scale consists of 12 notes: A-flat, B-flat, C, D, E-flat, F, G, A-flat, B-flat, C, D, E-flat. The notation shows the ascending and descending sequences.

Concert D-Flat Scale

♩ = 120

The Concert D-Flat Scale is written in treble clef with a key signature of four flats (B-flat, E-flat, A-flat, D-flat). The tempo is marked as quarter note = 120. The scale consists of 12 notes: D-flat, E-flat, F, G, A-flat, B-flat, C, D-flat, E-flat, F, G, A-flat. The notation shows the ascending and descending sequences.

Concert G Scale

♩ = 120

The Concert G Scale is written in treble clef with a key signature of one sharp (F-sharp). The tempo is marked as quarter note = 120. The scale consists of 12 notes: G, A, B, C, D, E, F-sharp, G, A, B, C, D. The notation shows the ascending and descending sequences.

Chromatic Scale-Concert C to C

♩ = 120

The Chromatic Scale-Concert C to C is written in treble clef. The tempo is marked as quarter note = 120. The scale consists of 24 notes: C, C-sharp, C, C-sharp, C, C-sharp, C, C-sharp, C, C-sharp, C, C-sharp, C, C-sharp, C, C-sharp, C, C-sharp, C, C-sharp, C, C-sharp, C, C-sharp, C. The notation shows the ascending and descending sequences with fingering letters (L for left hand, R for right hand) written below the notes.

L R L R L R L R L R L R L R L R L R L R L R L R L R

Glockenspiel Bells

IHSA Required Scales

All scales for wind instruments shall be played two octaves where applicable but one octave where range restricts.

Scales and the chromatic will be played from memory.

The scales listed, including the chromatic scale, will be called for in concert pitch and will be played two octaves, both up and down. This means that each player who plays a transposing instrument will have to transpose the given scale.

Concert C Scale

♩ = 120

The Concert C Scale is written in treble clef with a 4/4 time signature. The tempo marking is quarter note = 120. The scale consists of two staves. The first staff shows the ascending scale from middle C (C4) to C5. The second staff shows the descending scale from C5 to C4. The notes are: C4, D4, E4, F4, G4, A4, B4, C5, B4, A4, G4, F4, E4, D4, C4.

Concert F Scale

♩ = 120

The Concert F Scale is written in treble clef with a key signature of one flat (B-flat) and a 4/4 time signature. The tempo marking is quarter note = 120. The scale consists of two staves. The first staff shows the ascending scale from F4 to F5. The second staff shows the descending scale from F5 to F4. The notes are: F4, G4, A4, B-flat4, C5, D5, E5, F5, E5, D5, C5, B-flat4, A4, G4, F4.

Concert B-Flat Scale

♩ = 120

The Concert B-Flat Scale is written in treble clef with a key signature of two flats (B-flat and E-flat) and a 4/4 time signature. The tempo marking is quarter note = 120. The scale consists of two staves. The first staff shows the ascending scale from B-flat4 to B-flat5. The second staff shows the descending scale from B-flat5 to B-flat4. The notes are: B-flat4, C5, D5, E-flat5, F5, G5, A5, B-flat5, A5, G5, F5, E-flat5, D5, C5, B-flat4.

Concert E-Flat Scale

♩ = 120

The Concert E-Flat Scale is written in treble clef with a key signature of three flats (B-flat, E-flat, and A-flat) and a 4/4 time signature. The tempo marking is quarter note = 120. The scale consists of two staves. The first staff shows the ascending scale from E-flat4 to E-flat5. The second staff shows the descending scale from E-flat5 to E-flat4. The notes are: E-flat4, F4, G4, A-flat4, B-flat4, C5, D5, E-flat5, D5, C5, B-flat4, A-flat4, G4, F4, E-flat4.

IHSA Required Scales

Concert A-Flat Scale

♩ = 120

The Concert A-Flat Scale is written in treble clef with a key signature of three flats (B-flat, E-flat, A-flat). The tempo is marked as quarter note = 120. The scale consists of two lines of music: the first line shows the ascending scale from A-flat to G, and the second line shows the descending scale from G to A-flat.

Concert D-Flat Scale

♩ = 120

The Concert D-Flat Scale is written in treble clef with a key signature of four flats (B-flat, E-flat, A-flat, D-flat). The tempo is marked as quarter note = 120. The scale consists of two lines of music: the first line shows the ascending scale from D-flat to C, and the second line shows the descending scale from C to D-flat.

Concert G Scale

♩ = 120

The Concert G Scale is written in treble clef with a key signature of one sharp (F-sharp). The tempo is marked as quarter note = 120. The scale consists of two lines of music: the first line shows the ascending scale from G to G, and the second line shows the descending scale from G to G.

Chromatic Scale-Concert C to C

♩ = 120

The Chromatic Scale-Concert C to C is written in treble clef. The tempo is marked as quarter note = 120. The scale consists of three lines of music: the first line shows the ascending chromatic scale from C to C with fingering L R L R L R L R L R L R L R; the second line shows the descending chromatic scale from C to C with fingering L R L R L R L R L R L R L R; the third line shows the final descending chromatic scale from C to C with fingering R L R L R L R L R L R L R L R.

IHSA Required Scales

Timpani

Play a one octave scale in F major in half notes up and down.
The judge will ask the soloist to tune two intervals from the following.
The low pitch will be given and the soloist will then tune the interval.

Tune these intervals

C D Ab Eb G C

4

F C Bb F Db Ab

Concert F Scale

7

F G A Bb C D E F

11

IHSA Required Percussion Rudiments

In addition to a prepared solo, all percussion (non-mallet) soloists must play one rudiment from each group per the judges selection.

I. Roll Rudiments - Play one from this group

4. Multiple Bounce Roll

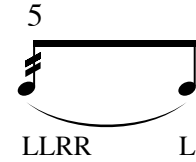
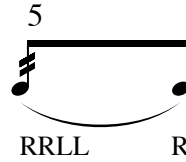


6. Double Stroke Open Roll



RRLRRL
LLRLLRR

7. Five Stroke Roll

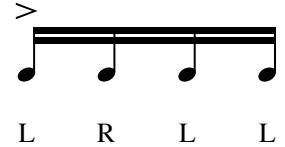
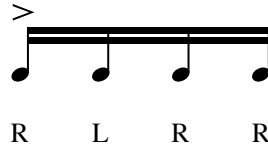


10. Nine Stroke Roll

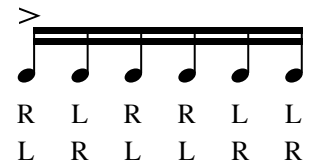
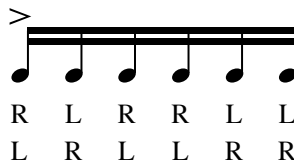


II. Diddle Rudiments - Play one from this group

16. Single Paradiddle



19. Single Paradiddle-diddle

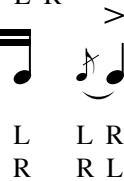
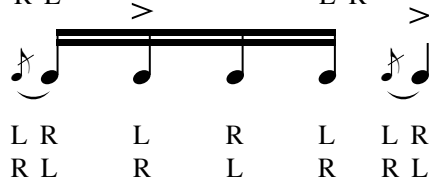


III. Flam Rudiments - Play one from this group

20. Flam



23. Flamacue

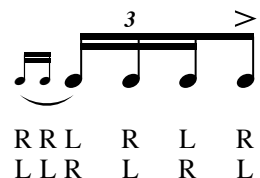
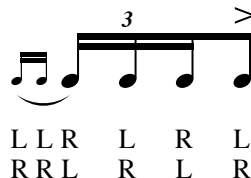


IV. Drag Rudiments - Play one from this group

31. Drag



38. Single Ratamacue



Note: The numbers listed next to the rudiments have been taken from the PAS recognized 40 rudiments.